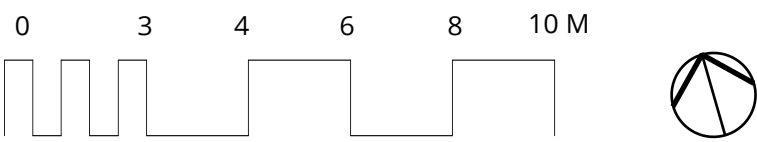
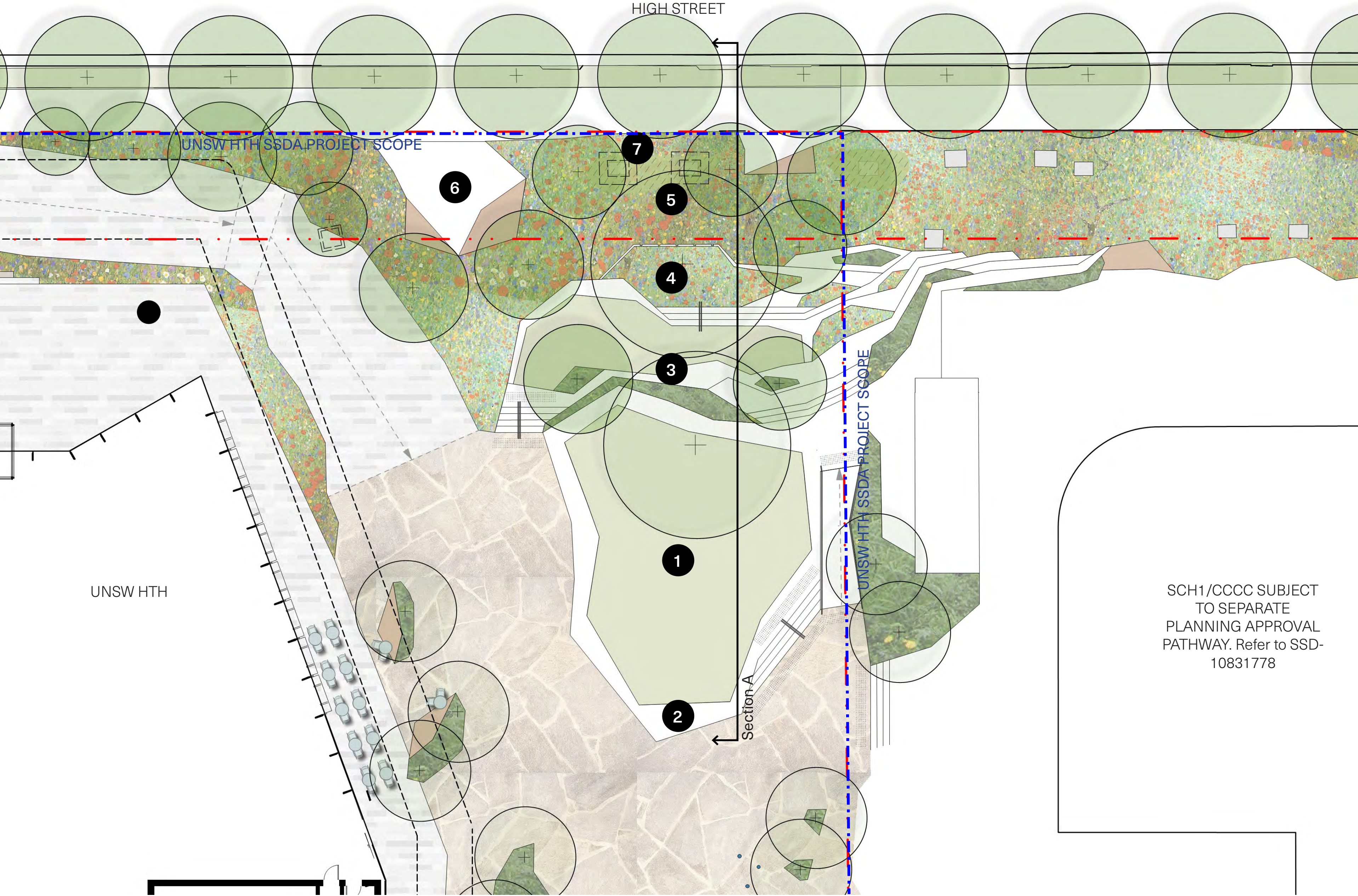


Drawing Number	Drawing Name	Scale	Revision
20084_SSDA-001	Site Plan	1:300 @A1	L
20084_SSDA-002	Northern Space Plan	1:150 @A1	J
20084_SSDA-003	Northern Space Section	1:200 @A1	H
20084_SSDA-004	Northern Space Perspective	NTS	F
20084_SSDA-005	Central Space Plan	1:150 @A1	K
20084_SSDA-006	Central Space Sections	1:200 @A1	G
20084_SSDA-007	Central Space Perspective	NTS	F
20084_SSDA-008	Breakout Space Plan	1:150 @A1	K
20084_SSDA-009	Breakout Space Sections	1:200 @A1	G
20084_SSDA-010	Breakout Space Perspective	NTS	F
20084_SSDA-011	High Street Entry Plan	1:150 @A1	I
20084_SSDA-012	High Street Entry Sections	1:200 @A1	I
20084_SSDA-013	High Street Entry Perspective	NTS	F
20084_SSDA-014	Botany St Plan	1:150 @A1	I
20084_SSDA-015	Botany St Sections	1:200 @A1	I
20084_SSDA-016	Gate 11 Entry Plan	1:150 @A1	J
20084_SSDA-017	Planting Schedule	1:300 @A1	D
20084_SSDA-018	Tree Planting Plan & Schedule	1:300 @A1	D







- 1/ Raised turf space for flexible use
- 2/ Seating edge with integrated stairs and 1:14 ramp
- 3/ Informal terraced seating platforms integrating pockets of planting
- 4/ Opportunities for biofiltration/WSUD
- 5/ 1:3 slope with Eastern Suburbs Banksia Scrub plant community
- 6/ Seating area adjacent to High Street footpath
- 7/ Existing stormwater infrastructure to be integrated within landscape treatment

The Northern Space provides an innovative response to a steep level change from High Street into the plaza. This is achieved via a combination of informal seating platforms and dense, folding landscapes reminiscent of the original dunal landscape.

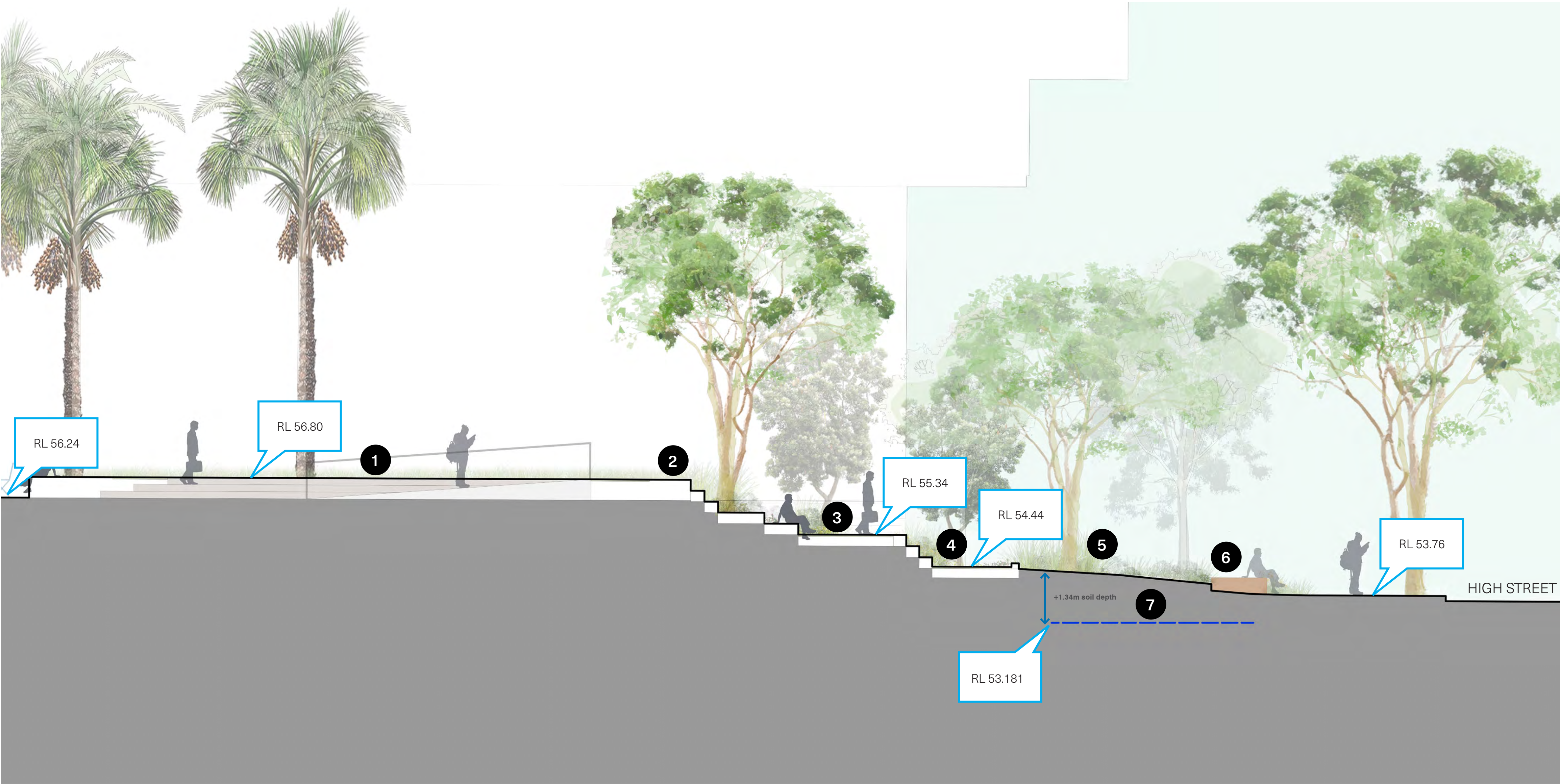
The Northern Space receives notable solar exposure due to its northerly aspect. Elevated platforms embedded amongst lawn and planting provide the opportunity for informal seating within a sunny setting whilst still establishing a cooler, shaded environment.

A raised lawn space extending from the Northern Space into the plaza provides amenity for informal rest and play, as well as servicing a range of outdoor events.

Character Precedents







- 1/ Raised turf space for flexible use
- 2/ Seating edge with integrated stairs and 1:14 ramp
- 3/ Informal terraced seating platforms integrating pockets of planting
- 4/ Opportunities for biofiltration/WSUD
- 5/ 1:3 Slope with Eastern Suburbs Banksia Scrub plant community
- 6/ Seating area adjacent to High Street footpath
- 7/ Stormtrap Level



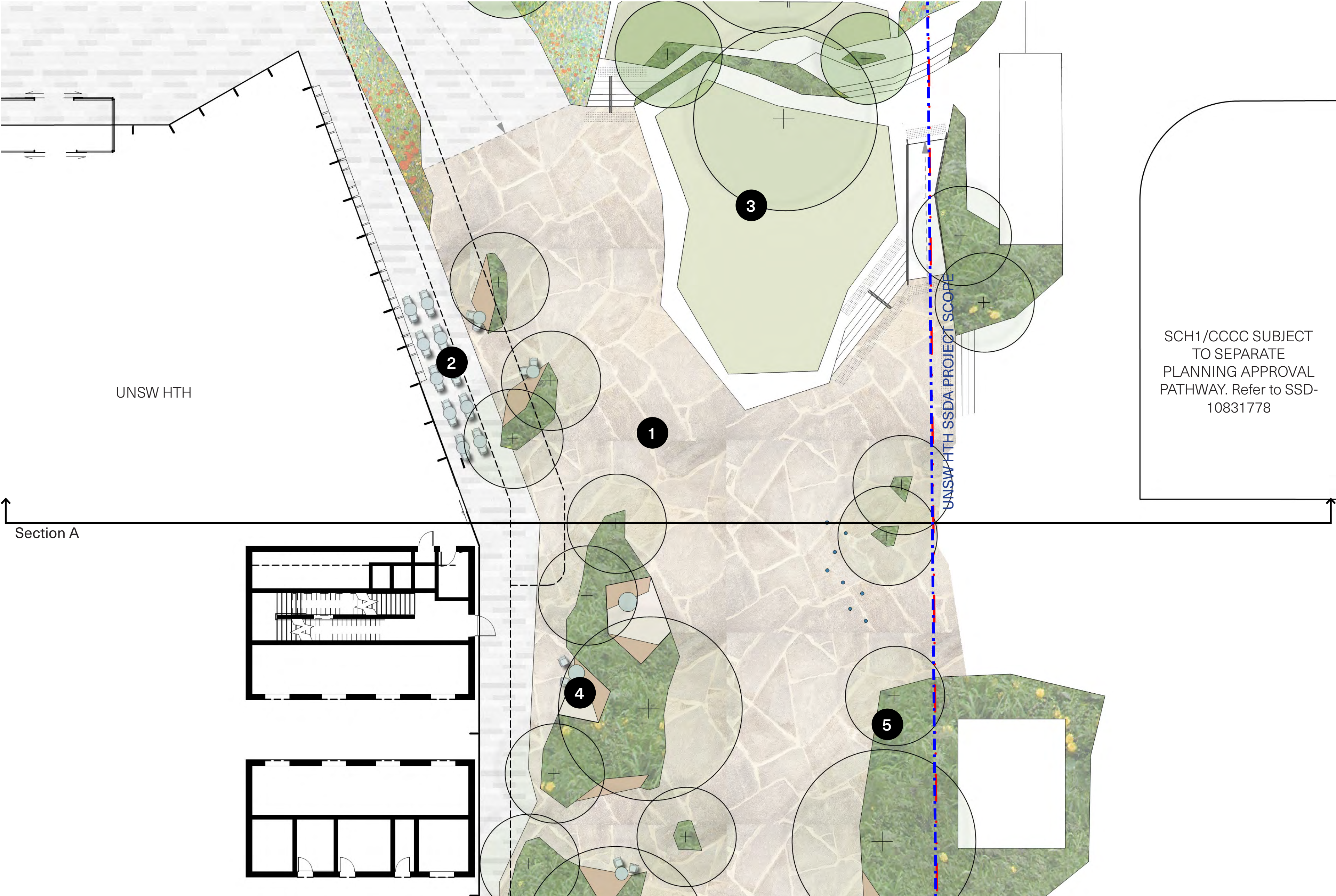




- 1/ Raised turf space for flexible use
- 2/ Seating edge with integrated stairs and 1:14 ramp
- 3/ Informal terraced seating platforms integrating pockets of planting
- 4/ Opportunities for biofiltration/WSUD
- 5/ 1:3 slope with Eastern Suburbs Banksia Scrub plant community
- 6/ Seating area adjacent to High Street footpath



Central Space - Landscape Plan



Legend

- 1/ Open plaza space for flexible uses with feature paving
- 2/ External F&B space with fixed and loose furniture
- 3/ Assessable turf area adjacent northern terraces
- 4/ Intimate dwell spaces amongst lush planting
- 5/ Assessable 1:40 grade ensuring compliant connection into SCH Stage 1 & the CCCC

The Central Space is the heart of UNSW HTH. It is a multifunctional space comprised of several smaller zones with distinct character and function.

The Central Space provides a larger open space and gives opportunity to host events, as well as servicing its everyday transitional nature. The space is flexible and can be used for a variety of purposes throughout the year.

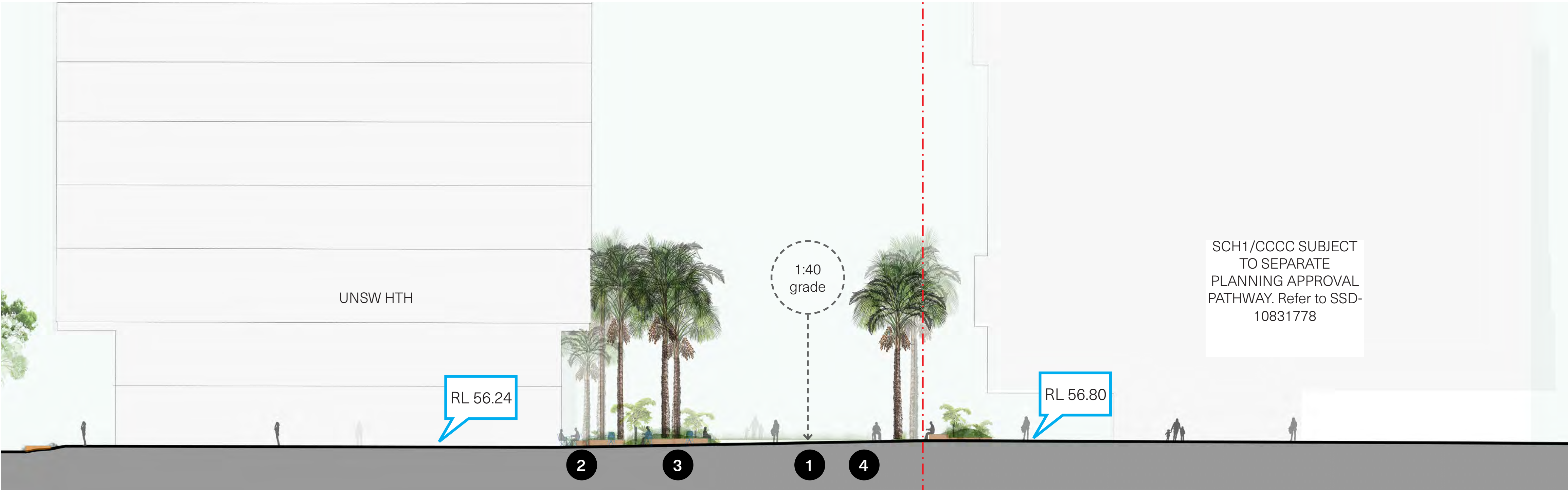
The north-eastern section provides opportunity for a F&B space offering an inside-outside experience in which the boundaries are blurred.

The southern gully space is comprised of intimate dwelling spaces amongst dense rainforest planting to establish a cool, shaded space for rest.

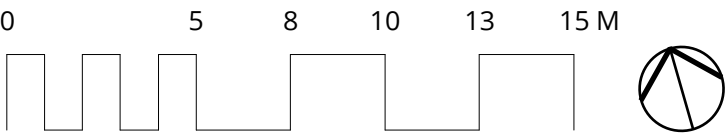
Indicative Precedents







- 1/ Open plaza space for flexible uses with feature paving
- 2/ External F&B space with fixed and loose furniture
- 3/ Intimate dwell spaces amongst lush planting
- 4/ Assessible 1:40 grade ensuring compliant connection into Sydney Childrens' Hospital







- 1/ Central Space
- 2/ F&B Space
- 3/ Intimate dwelling spaces amongst dense rainforest planting





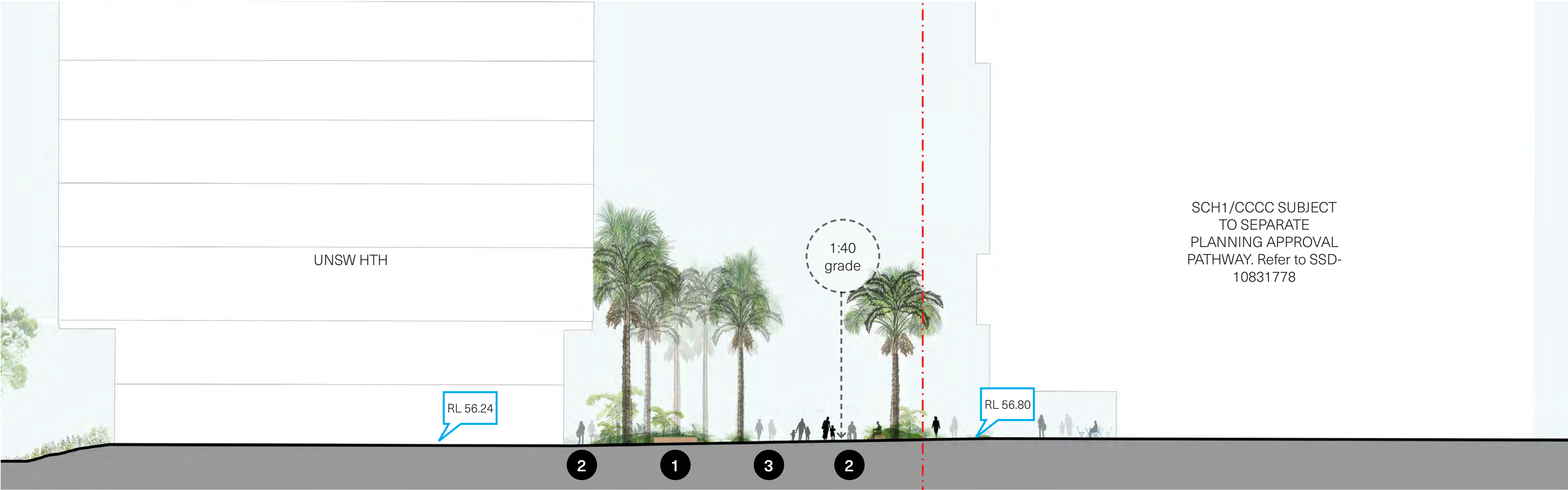
- 1/ Intimate dwelling spaces with fixed seating surrounded by lush planting appropriate for the microclimate
- 2/ Open, paved paths allowing for clear pedestrian wayfinding and movement between the buildings
- 3/ Assessible 1:40 grade ensuring compliant connection into SCH Stage 1 & the CCCC

The southern gully space is comprised of intimate dwelling spaces amongst dense rainforest planting to establish a cool, shaded space for rest. This space also acts as an outdoor extension of the UNSW HTH seminar space and can be used for various events.

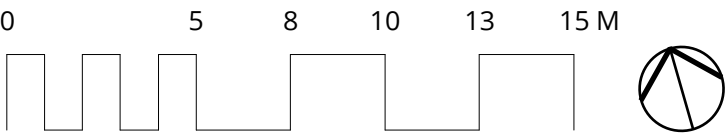
Indicative Precedents







- 1/ Intimate dwelling spaces with fixed seating surrounded by lush planting appropriate for the microclimate
- 2/ Open, paved paths allowing for clear pedestrian wayfinding and movement between the buildings
- 3/ Assessible 1:40 grade ensuring compliant connection into SCH Stage 1 & the CCCC

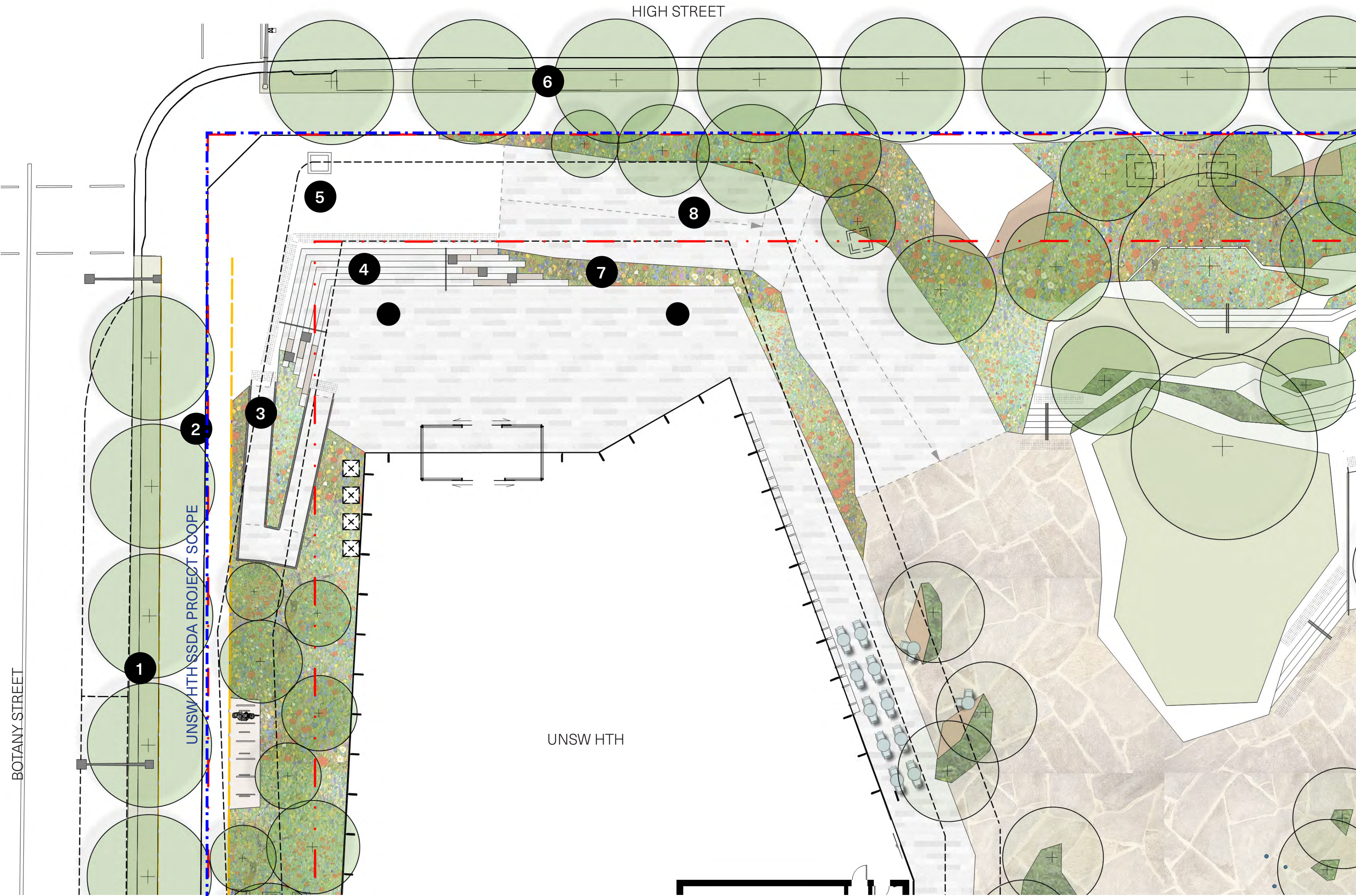






- 1/ Central Space
- 2/ Open, paved paths allowing for clear pedestrian wayfinding and movement between the buildings
- 3/ Intimate dwelling spaces amongst dense rainforest planting





- 1/ Proposed street trees to reflect tree palette defined by the IASB development of Lophostemon confertus
- 2/ 4m wide shared path to Botany St footpath including 2m wide planted verge
- 3/ 1:14 ramp providing compliant access to building entry
- 4/ Stairs and seating steps to building entry
- 5/ Existing sewer / stormwater infrastructure to be integrated within public realm response
- 6/ Existing street trees to High St to be retained and protected
- 7/ Planted embankment adjacent to building entry
- 8/ 1:26 walkway providing compliant access from streetscape into plaza

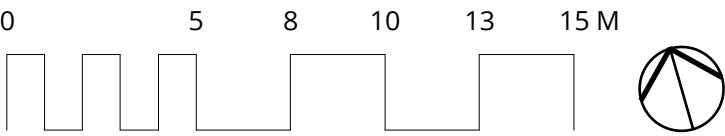
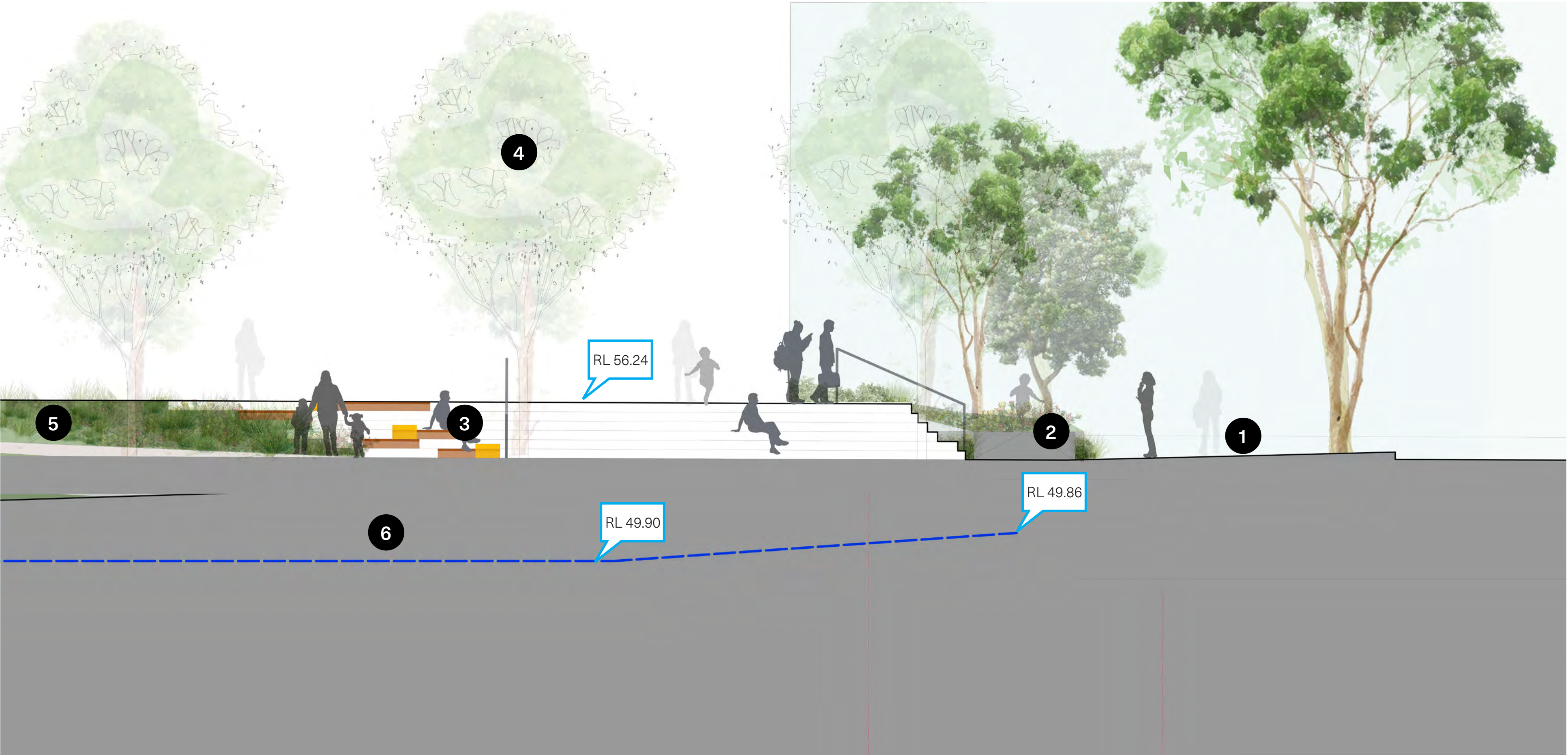
The interface between Botany and High Streets is met with equitable access in the form of a staircase which wraps and directs users into the site, alongside 1:14 ramp access into the site.

The landscape planting is comprised of a dense lower understorey of hardy, strappy plants and a tree canopy filtered throughout.

Character Precedents









This architectural rendering illustrates a modern building entrance featuring a wide, paved plaza, a set of wide stairs, and a glass-walled entrance. The scene is populated with stylized human figures. Numbered callouts (1-6) highlight specific design features:

- 1. Paved plaza area
- 2. Glass entrance wall
- 3. Stair railing
- 4. Landscaped area with trees and shrubs
- 5. Yellow safety bollard
- 6. Paved plaza area

- 1/ 4m wide shared path to Botany St footpath including 2m wide planted verge
- 2/ 1:14 ramp providing compliant access to building entry
- 3/ Stairs and seating steps to building entry
- 4/ Existing street trees to High St to be retained and protected
- 5/ Planted embankment adjacent to building entry
- 6/ 1:21 walkway providing compliant access from streetscape into plaza



Botany Street Interface - Landscape Plan



Character Precedents



Legend

- 1/ 4m wide shared path with 2m wide planted verge to reflect streetscape conditions adjacent to IASB
- 2/ Landscape embankment with a series of endemic and native plants appropriate to the microclimate

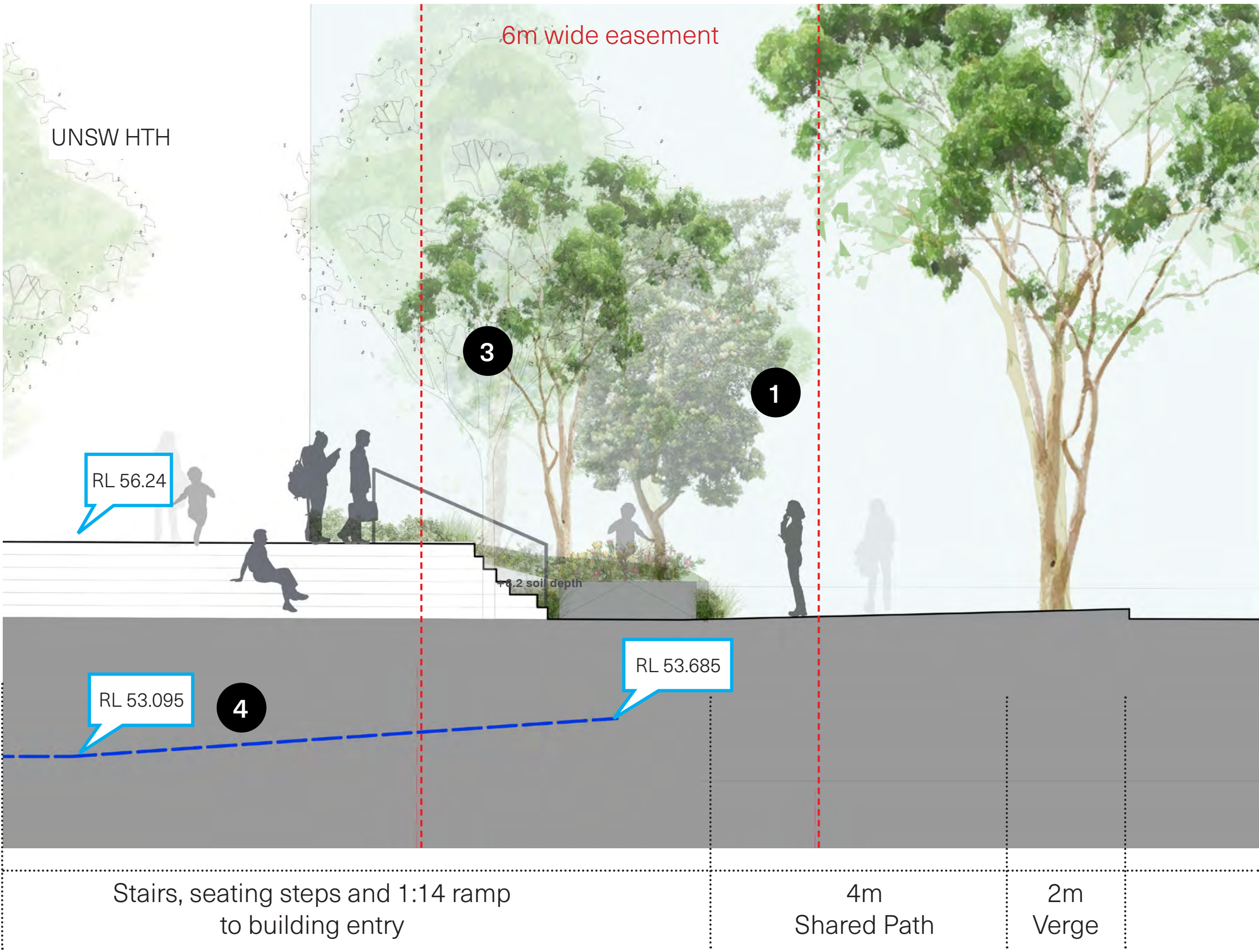
Botany Street encompasses a large landscape embankment, 4m wide Shared Path and public seating.

The landscape planting is comprised of a dense lower understorey of hardy, strappy plants and a tree canopy filtered throughout.

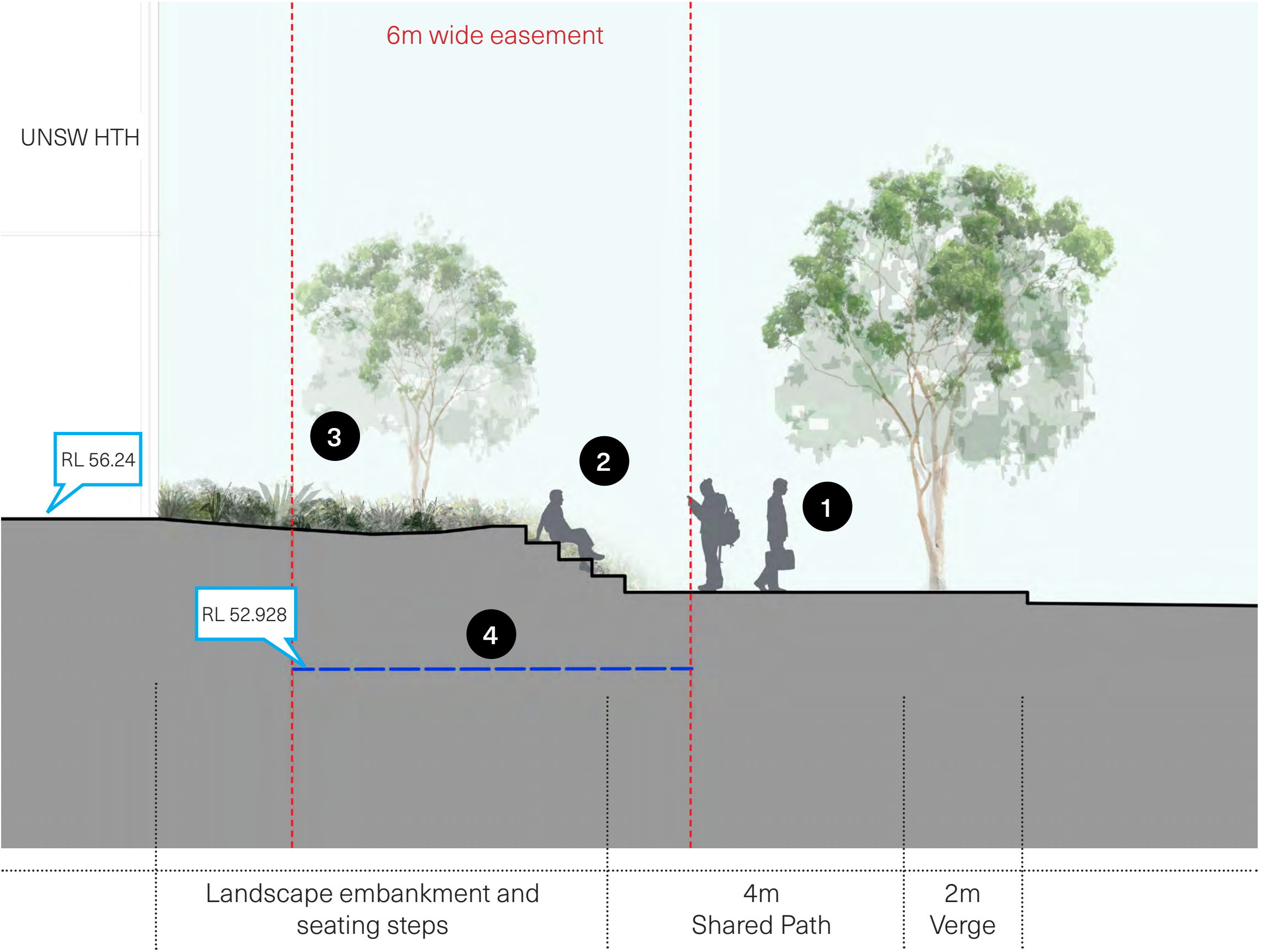




Botany Street Interface - Section AA 1:200



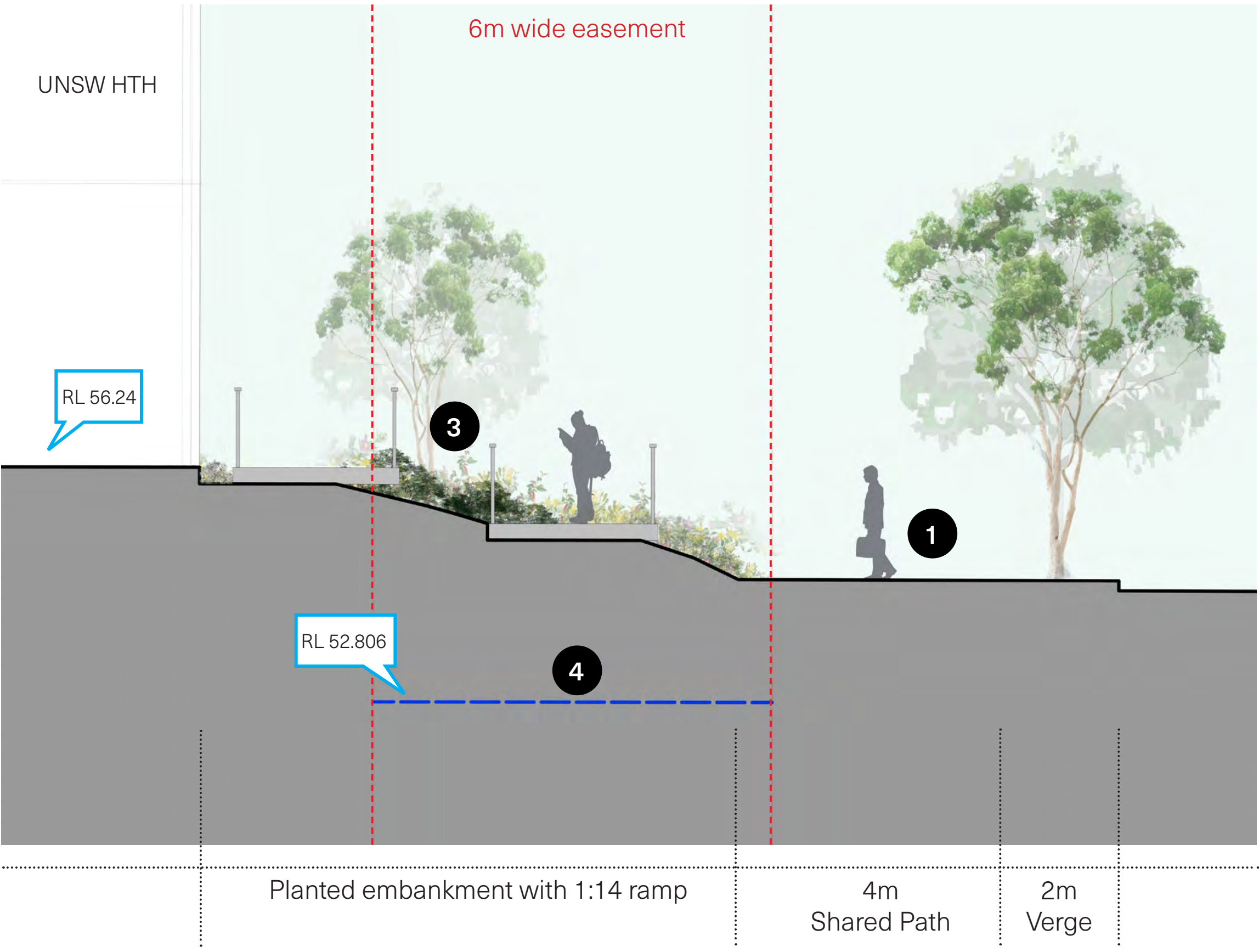
Section BB 1:200



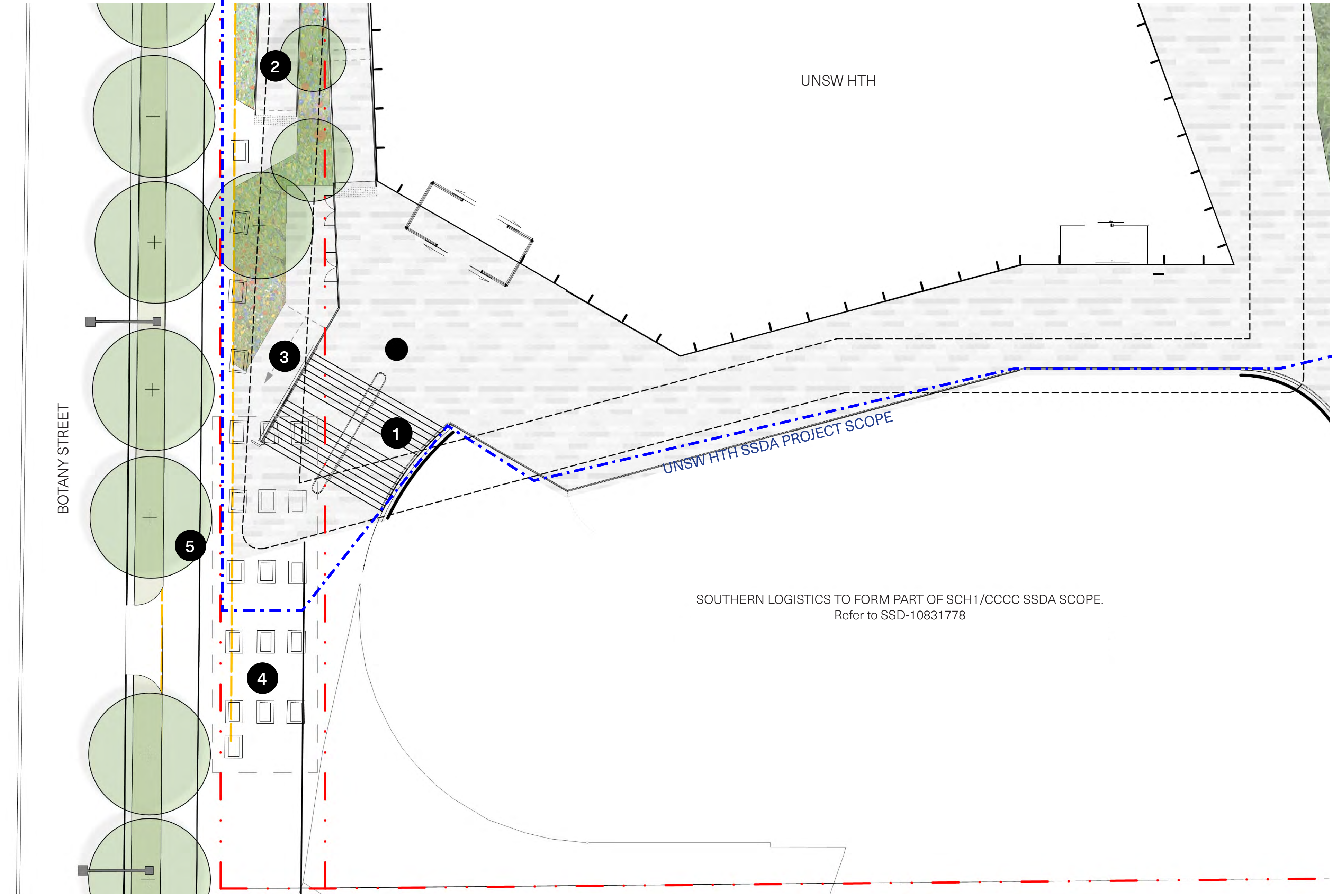
Legend

- 1/ 4m wide shared path with 2m wide planted verge to reflect streetscape conditions adjacent to IASB
- 2/ Public seating steps integrated amongst planting
- 3/ Landscape embankment with a series of endemic and native plants appropriate to the microclimate
- 4/ Stormtrap Level

Section CC 1:200







- 1/ Stairs from Gate 11 / Botany St into building entry
- 2/ 1:14 compliant ramp providing DDA access from streetscape into the building
- 3/ Ramp entry to B1 end of trip facilities
- 4/ Surface treatment designed to accomodate existing stormwater infrastructure including slotted and suspended pavers and grated drains
- 5/ 4m wide shared path to Botany St footpath including 2m wide planted verge

The building entry from Gate 11 is the link between the UNSW HTH building and Central Space. Users approaching the site from UNSW Gate 11, and from Botany Street can access the site via staircase or ramp for equitable access.

Amongst this lies entry to the EoT facilities which provides over 100 bicycle storage spaces.

These facilities are embedded within the Botany Street Landscape embankment which softens the hardscapes.

Character Precedents







High Street Endemic Planting Palette

Indicative Plant Schedule			
Botanical Name	Common Name	Pot Size	Origin
Shrubs & Groundcovers			
<i>Actinotus helianthii</i>	Flannel Flower	200mm	Native
<i>Bauera rubioides</i>	Dog Rose	200mm	Native
<i>Bossiaea heterophylla</i>	Variable Bossiaea	200mm	Native
<i>Dillwynia retorta</i>	Healthy Parrot Pea	200mm	Native
<i>Epacris longiflora</i>	Fuchsia Heath	200mm	Native
<i>Eriostemon australasius</i>	Pink Wax Flower	200mm	Native
<i>Hardenbergia violacea</i>	Happy Wanderer	200mm	Native
<i>Kunzea ambigua</i>	White Kunzea	200mm	Native
<i>Lambertia formosa</i>	Mountain Devil	200mm	Native
<i>Leptospermum laevigatum</i>	Coast Tea Tree	200mm	Native
<i>Melaleuca nodosa</i>	Prickly-leaved Paperbark	200mm	Native
<i>Melaleuca squamea</i>	Swamp Honey-myrtle	200mm	Native
<i>Ricinocarpos pinifolius</i>	Wedding Bush	200mm	Native
<i>Styphelia viridis</i>	Green Five Corners	200mm	Native
<i>Xanthorrhoea resinifera</i>	Grass Tree	200mm	Native

Botany Street Endemic Planting Palette

Indicative Plant Schedule			
Botanical Name	Common Name	Pot Size	Origin
Shrubs & Groundcovers			
<i>Correa alba</i>	White Correa	200mm	Native
<i>Cyathochaeta diandra</i>	Sheath Sedge	200mm	Native
<i>Dianella revoluta</i>	Blue Flax Lilly	200mm	Native
<i>Dichelachne crinita</i>	Longhair Plume Grass	200mm	Native
<i>Ficinia nodosa</i>	Knotted Club-rush	200mm	Native
<i>Lepidosperma laterale</i>	Variable Swordsedge	200mm	Native
<i>Leptocarpus tenax</i>	Slender Twine-rush	200mm	Native
<i>Lomandra longifolia</i>	Spiny-head Mat-rush	200mm	Native
<i>Microlaena stipoides</i>	Weeping Grass	200mm	Native
<i>Myoporum parvifolium</i>	Yareena	200mm	Native
<i>Pennisetum alopecuroides</i> 'Nafay'	Swamp Foxtail	200mm	Native
<i>Persoonia lanceolata</i>	Lance-leaf Geebung	200mm	Native
<i>Poa labillardieri</i>	Common Tussock Grass	200mm	Native
<i>Poa poiformis</i>	Blue Tussock Grass	200mm	Native
<i>Rytidosperma</i>	Wallaby Grass	200mm	Native
<i>Themeda triandra</i>	Kangaroo Grass	200mm	Native
<i>Westringia fruticosa</i>	Coastal Rosemary	200mm	Native



Tree Planting Plan & Schedule



Tree Schedule

Tree Schedule						
Key	Botanical Name	Common Name	Mature Size	Origin	Pot Size	QTY
A	Angophora costata	Smooth-barker Apple	20m H x 12m W	Native	400L	6
Bi	Banksia integrifolia	Coast Banksia	15m H x 6m W	Native	400L	12
Bs	Banksia serrata	Old Man Banksia	10m H x 5m W	Native	400L	15
T	Tristaniopsis 'Luscious'	Water Gum	7-12m H x 5m W	Native	400L	7
L	Livistona australis	Cabbage-tree Palm	20m H x 6m W	Native	400L	17